



Deep Run High School Robotics Team 1086 - Blue Cheese

<http://www.bluecheese1086.org>

4801 Twin Hickory Road • Glen Allen, VA • (804) 364 - 8000

Team Handbook 2010



Table of Contents:

Introduction

1. Our Team

1.1 Mission

1.2 History

1.3 Core Values

1.4 Identity

1.3 Organizational Chart

2. Student Expectations

2.1 Participation

2.2 Grades

2.3 Roles

2.4 Fundraising

2.5 Travel Requirements

2.6 Competition Behavior

3. Team Contacts

4. Resources



Introduction

This handbook is intended to be a source of information for anyone involved with Deep Run High School's Blue Cheese Robotics Team 1086.

Blue Cheese Robotics is a student run organization based out of Deep Run High School in Glen Allen, VA. Blue Cheese participates in the *FIRST* Robotics Competition (FRC) as Team 1086 and in the *FIRST* Tech Challenge (FTC) as Team 93. *FIRST* (For Inspiration and Recognition of Science and Technology) is an international organization focused on inspiring students to pursue careers in science, technology, engineering and math.

FIRST competitions challenge students, collaborating with professional engineering mentors, to design, build and program a robot in a period of only six weeks. Teams then attend competitions where alliances of robots compete against each another in an exciting, sports-like atmosphere. Blue Cheese actively promotes the goals of *FIRST* by inspiring students to pursue careers in science and technology.

1. Our Team

1.1 Mission

Blue Cheese Robotics strives to inspire the next generation of innovators, leaders, and achievers by promoting life skills such as critical thinking, teamwork, responsibility, and community involvement.

1.2 History

Team 1086 was founded in 2002 and competed in the 2003 season with a robot named iPoe. The next year, we became the Pirates of the Black Pearl. The team won the Imagery Award at the 2004 VCU Competition for the Black Pearl theme. We changed our theme once again in 2008 to Blue Cheese Robotics.

In 2006, the team participated in the *FIRST* Vex Competition (FVC), which eventually became the *FIRST* Tech Challenge. Members who had participated in the *FIRST* Lego League team at Short Pump Middle School joined the FVC team, creating a group of students that had risen up through all levels of *FIRST*. *FIRST* Lego League continued to expand at local Middle and Elementary schools, creating a local *FIRST* community around Deep Run High School and its feeder schools. In 2009, this community involved more than 80 students in all three levels of *FIRST*.

Since 2003, our team has participated in the NASA/VCU Regional right here in Richmond, VA. Our most successful years at competition were in the 2008 and 2009 seasons; each time we were not only the NASA/VCU Regional Champion, but the NASA/VCU Regional Chairman's Award winner as well. In addition to the NASA/VCU Regional, Team 1086 has also attended the *FIRST* World Championship Event in 2004, 2007, 2008, and 2009. At the 2009 *FIRST* World Championship Event, we received the Spirit Award, our first championship award, for best representing the spirit of the *FIRST* program.

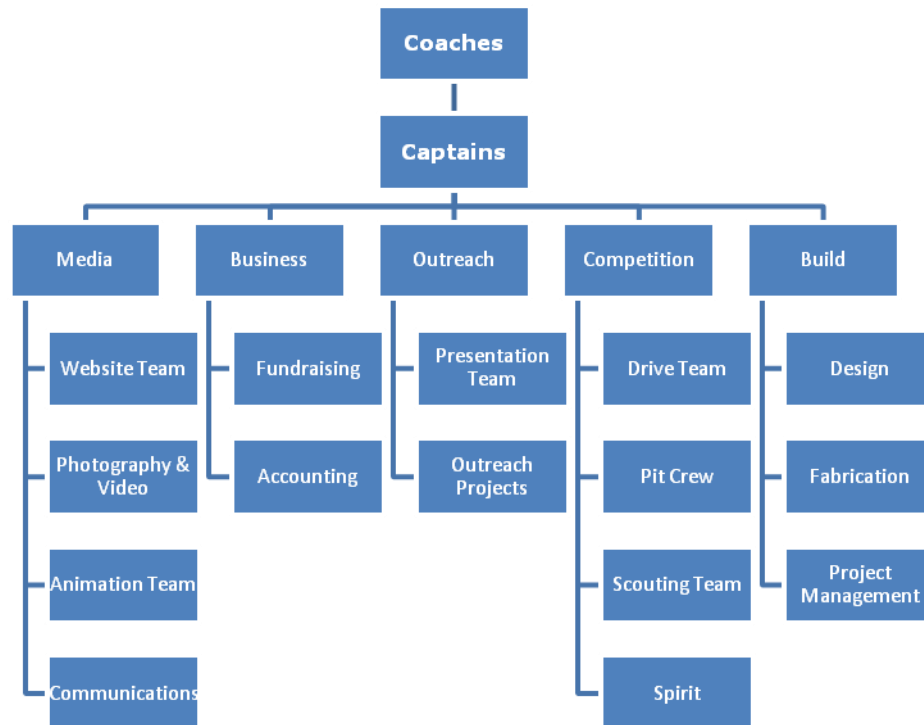
1.3 Core Values

A-1 is the Blue Cheese Robotics way of applying Gracious Professionalism to every aspect of our organization. A-1 means diligently and thoroughly carrying out every task while showing appreciation, respect, and integrity in every action.

1.4 Identity

The name Blue Cheese comes from our method of removing weight from our robots: round holes drilled into our aluminum frame, called “cheese holes” due to their similarity to Swiss cheese.

1.5 Organizational Chart



Coaches are staff sponsors and lead mentors. Oversee the team’s day to day operations.

Captains are in most cases high school seniors and the executive officers of the team. They are responsible for leading and taking care of the day to day operations of the team. These students lead the meetings, keep records, and make team decisions with the coaches and officers.

Officers lead the Media, Business, Outreach, Competition, and Build sub-teams and are responsible for reporting progress to the team during the year.

Team members rarely have roles in a single area of the team exclusively. Each member completes vital tasks on a variety sub-teams during the year.

2. Student Expectations

2.1 Participation

Team members are expected to participate in work sessions and team meetings. Outside of the competition season, the team meets every Wednesday, after school, in room 130 or 236. Pre-season, team members can participate in demonstrations, fundraisers, team-building activities, or the *FIRST* Tech Challenge. During build and competition season from early January until April the team may meet at various locations and times. Members are expected to keep up to date on meeting locations and times.

2.2 Grades

All team members are expected to maintain satisfactory grades in all classes – grade checks will be done when necessary. Students must be passing all classes to attend events and competitions.

2.3 Roles

Members often take on multiple roles in different areas the team. New students are not required to have experience in team functions, but must be willing to learn and eventually take on a role with the team.

2.4 Fundraising

Each student is responsible for raising part of the team's budget by doing one or more of the following:

- Actively participating in at least two major fundraisers
- Bringing in a new sponsor or family donation

2.5 Travel Requirements

In order to travel with the team, students must:

- Not be failing or at risk of failing any class
- Contribute positively to the team
- Attend meetings
- Meet fundraising requirement
- Understand the robot's function and the competition challenge
- Understand the team's purpose, goals, and procedures

2.6 Competition Behavior

Team members are responsible for their actions during competition. An individual's behavior reflects on our team, our sponsors, and Deep Run High School. Team members are expected to not only follow the school's Code of Conduct, but also to act with respect and gracious professionalism towards everyone they encounter.

Behavior that is deemed below the standards of Team 1086 will result in minor punishment. More severe infractions at a competition may result in an immediate flight or bus trip home at the expense of the team member, and suspension or expulsion from the team.

3. Team Contacts

If you have any questions, concerns, or suggestions you can contact:

Team Captains and Coaches - bluecheese1086@yahoo.com

Ms. Nolen (Coach) – fnolen@henrico.k12.va.us

Mr. Clarke (Coach) – joclarke@henrico.k12.va.us



4. Resources

- Team Website <http://www.bluecheese1086.org>
- Official *FIRST* Website <http://www.usfirst.org>
- Local *FIRST* Website <http://www.virginiafirst.org>